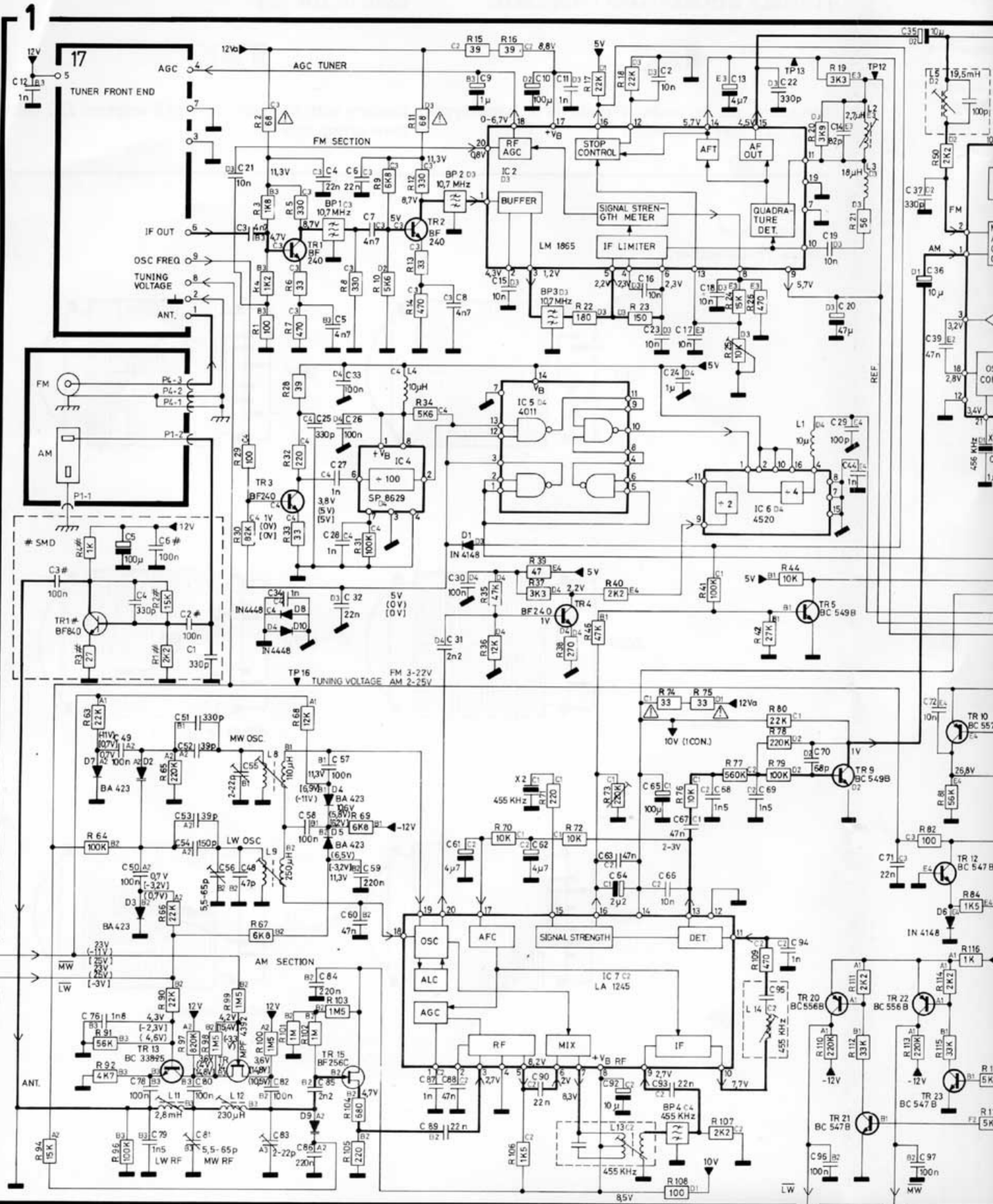
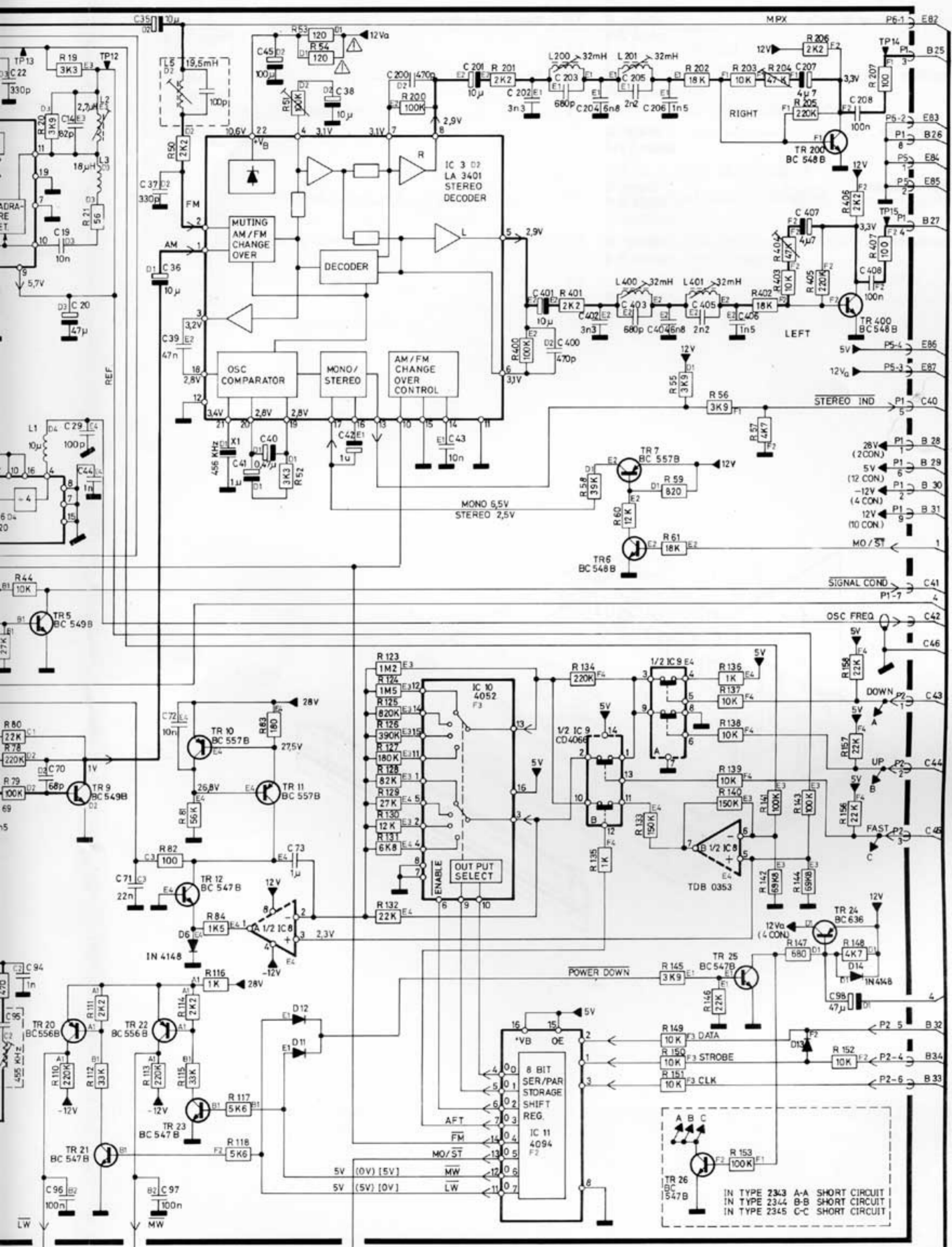


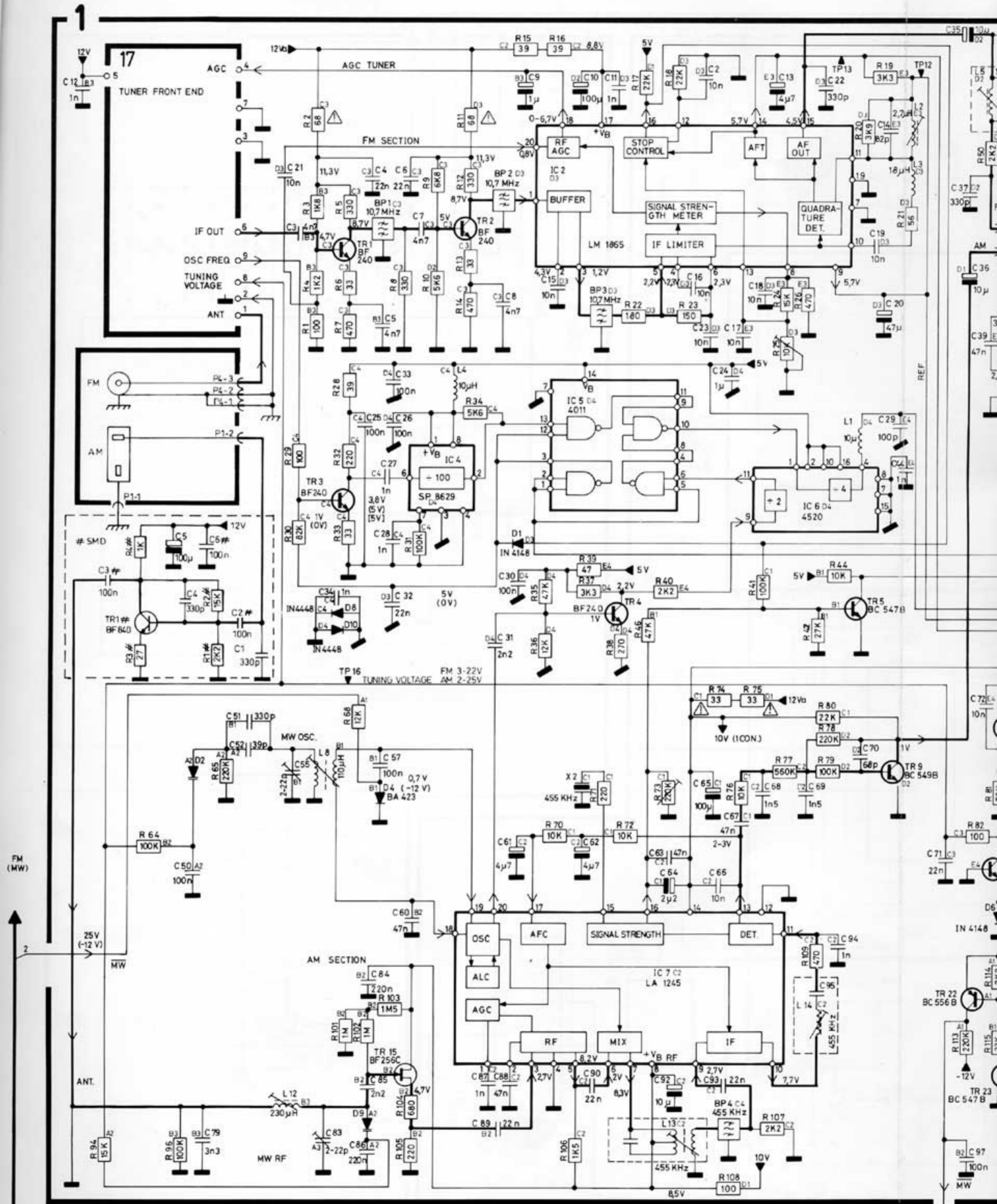
DIAGRAM A AM-FM, TUNER, IF, STEREO DECODER (Type 2341, 2342)





IN TYPE 2343 A-A SHORT CIRCUIT  
 IN TYPE 2344 B-B SHORT CIRCUIT  
 IN TYPE 2345 C-C SHORT CIRCUIT

DIAGRAM A AM-FM, TUNER, IF, STEREO DECODER (Type 2343, 2344, 2345)



(X CON) = NUMBER OF VOLTAGE CONNECTIONS

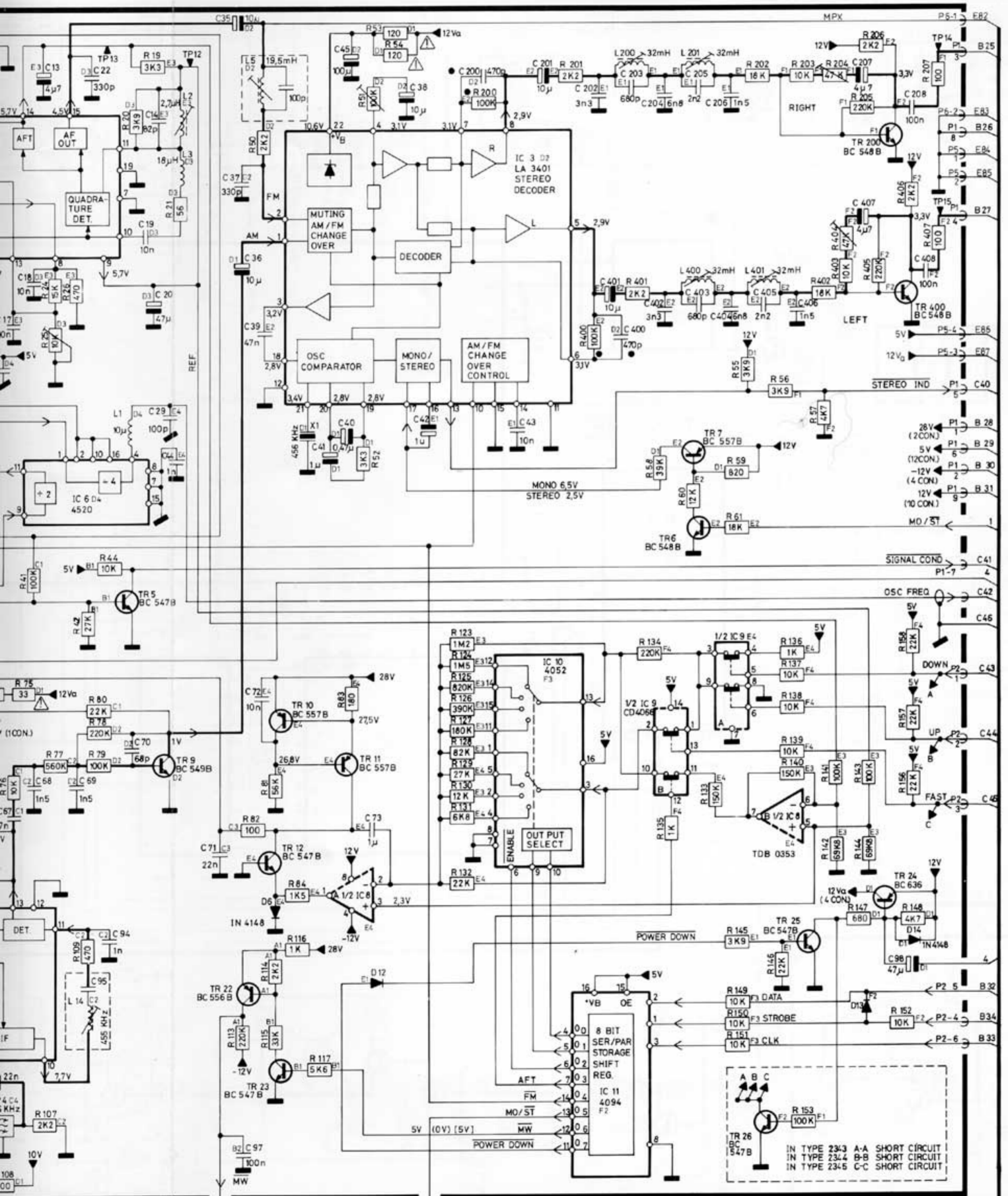
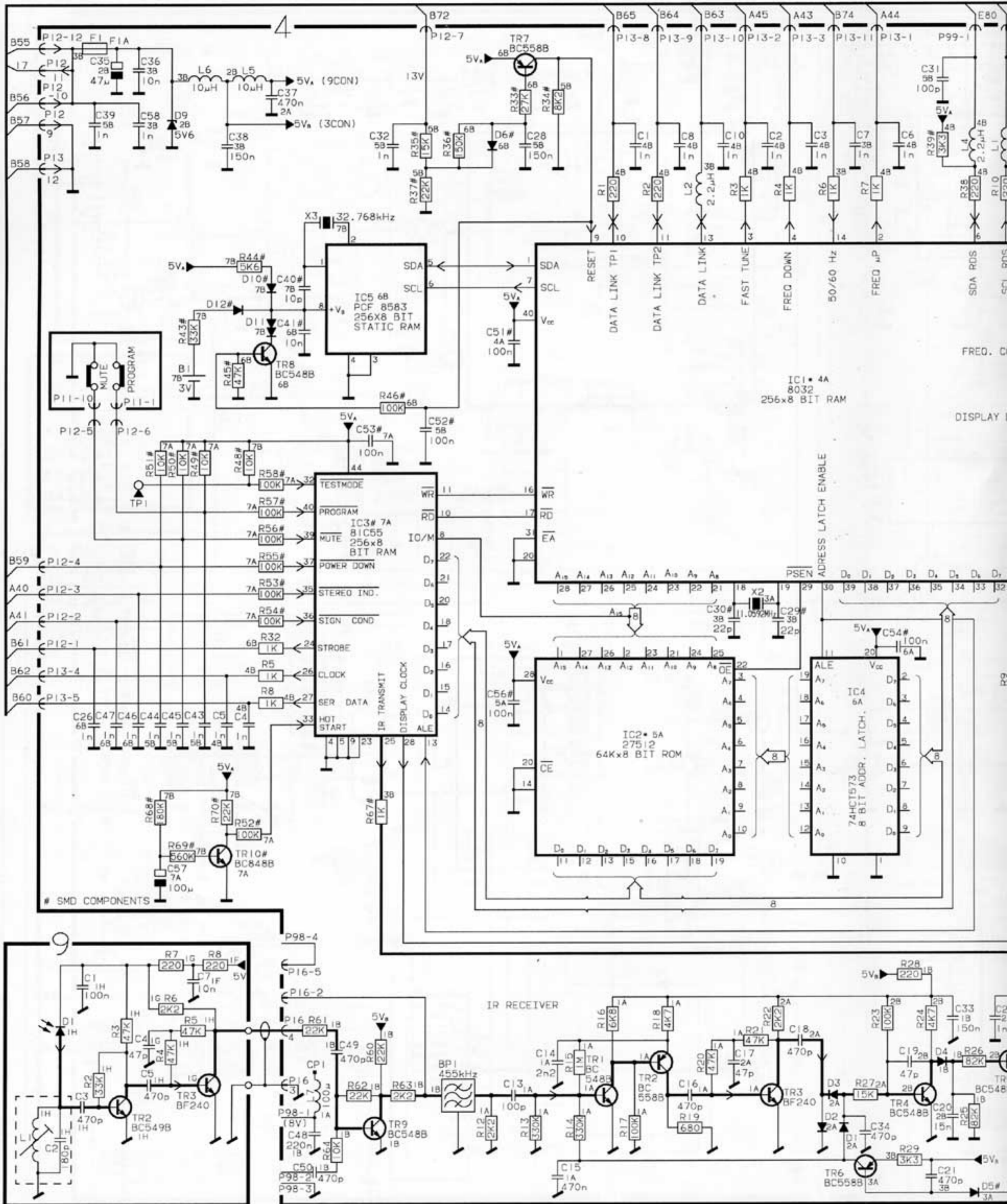
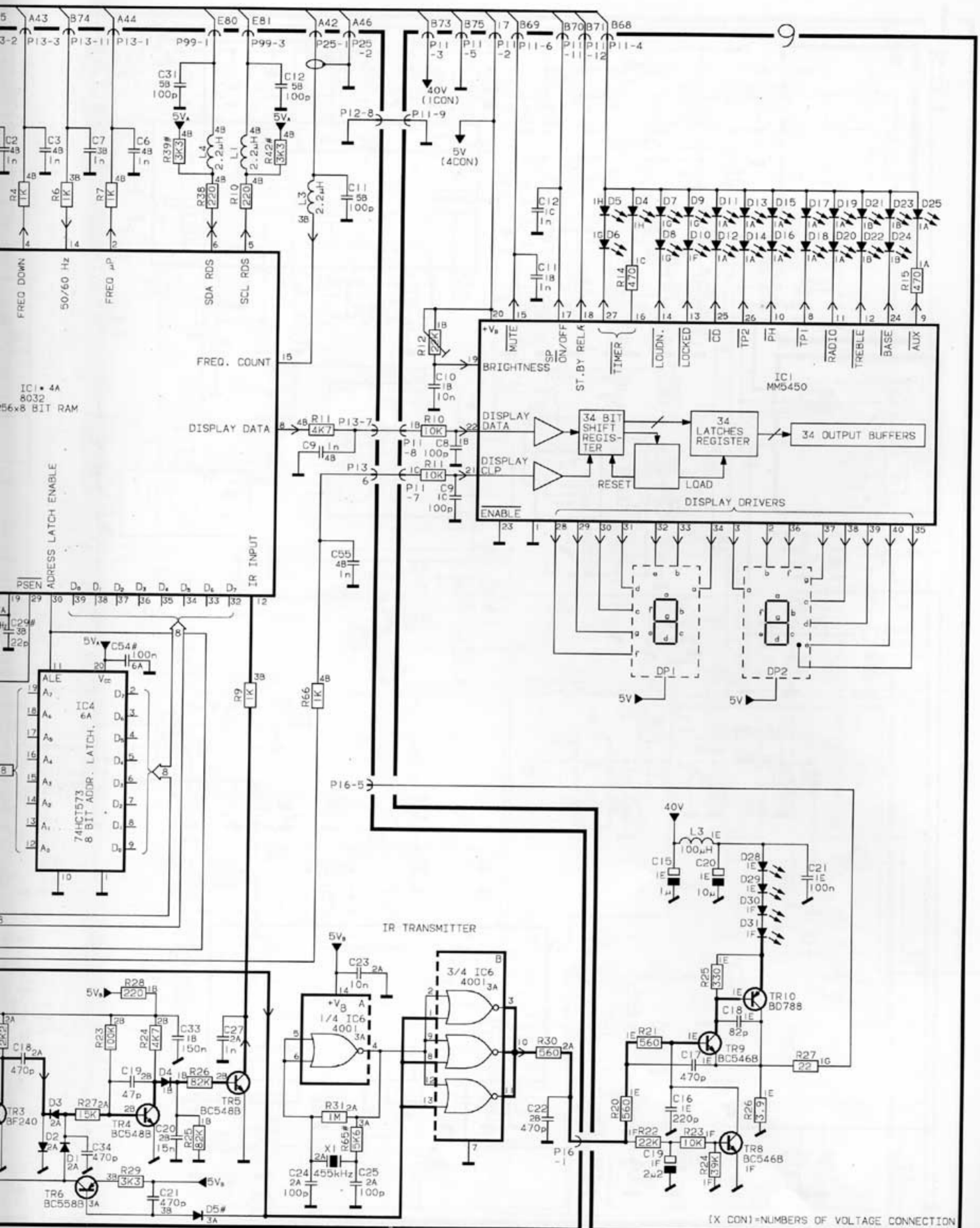


DIAGRAM C MICROCOMPUTER, IR TRANSCEIVER, DISPLAY





- A86
- A87
- A85
- A84
- A82
- A83

## Corrections for Beomaster 6500

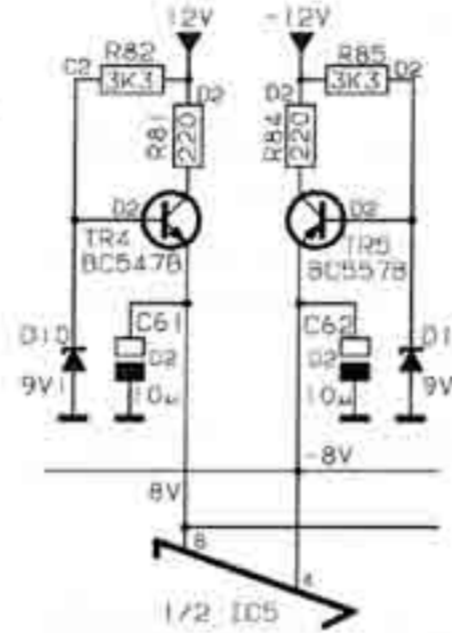
### DIAGRAMS

#### Page 2-4:

2R18 must be 5020881 22Ω 5% 1/4W

An kondensator part no. 4200510 10μ 20% 16V has been added to the collector on 2TR16.

3R81 and 3R84 5010092 220Ω 5% 1/4W has been added:



7TR2 BC338 is an NPN transistor. Emitter to the ground.

#### Page 2-5:

Connection to pin 7 (TEST) on 4IC2 is deleted.

The value of 4X1 is 11.0592MHz

Part no. on 4IC1\* must be 8341069

Part no. on 4IC4\* must be 8341309

Part no. on PCB 9 must be 8001284

#### List of Electrical Parts page 3-3

2C6, 2C7 must be 4200530 10000μF 20% 50V

2RL6 is named wrong. 2RL1 is correct

#### List of Mechanical Parts page 4-3

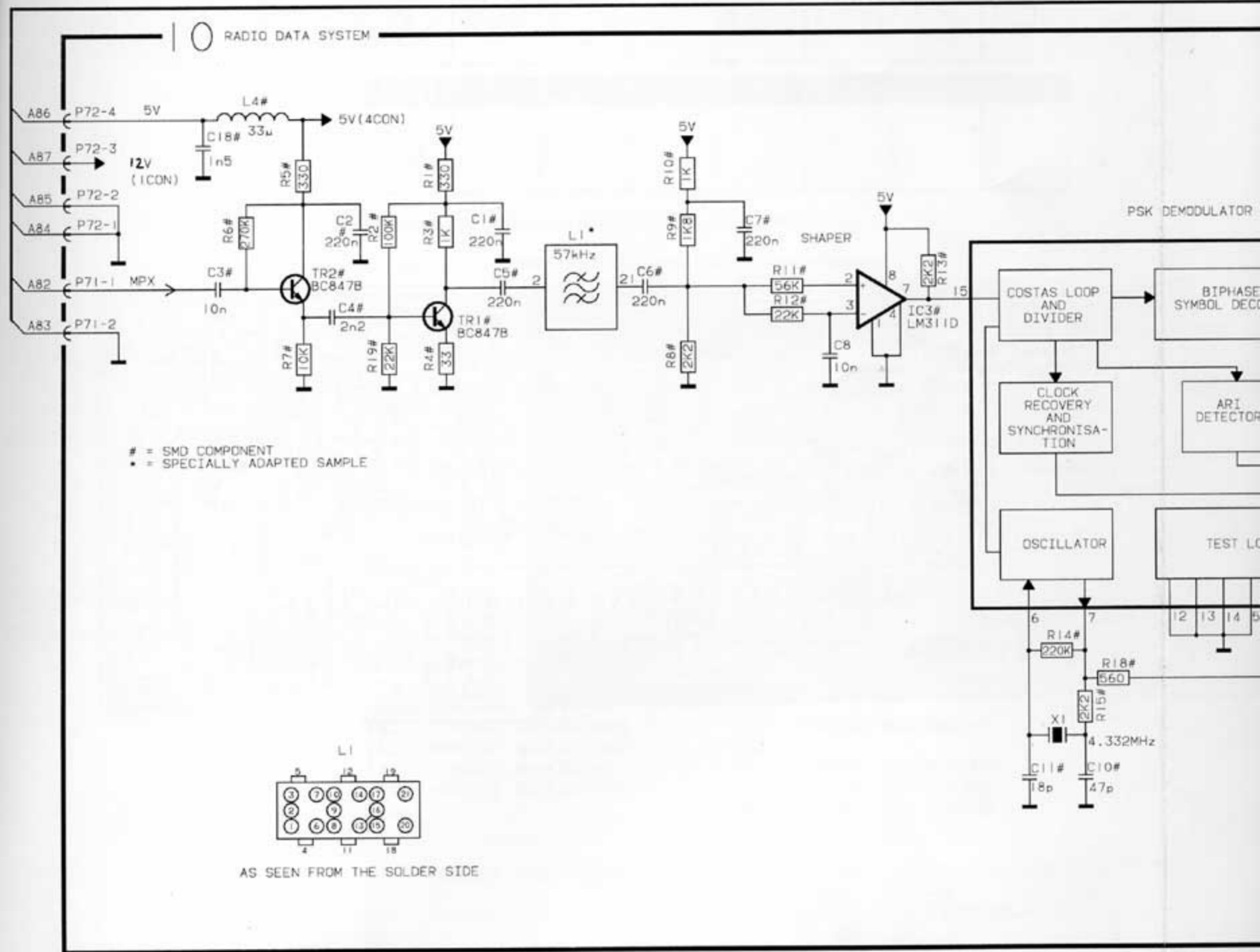
12 Modul part no. must be 8002821

- |      |                |
|------|----------------|
| 9504 | 2804055 Wheel  |
| 9510 | 2854128 Arm    |
| 9511 | 2576050 Spacer |

#### Accessories page 4-4

8087016 IR-sensor kit

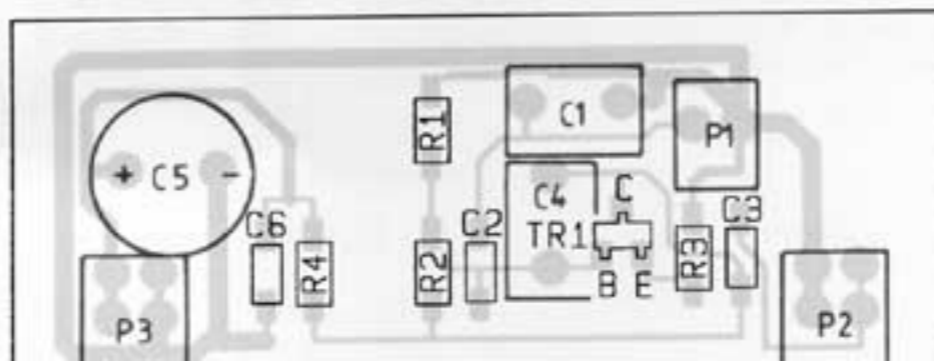
## DIAGRAM E RADIO DATA SYSTEM



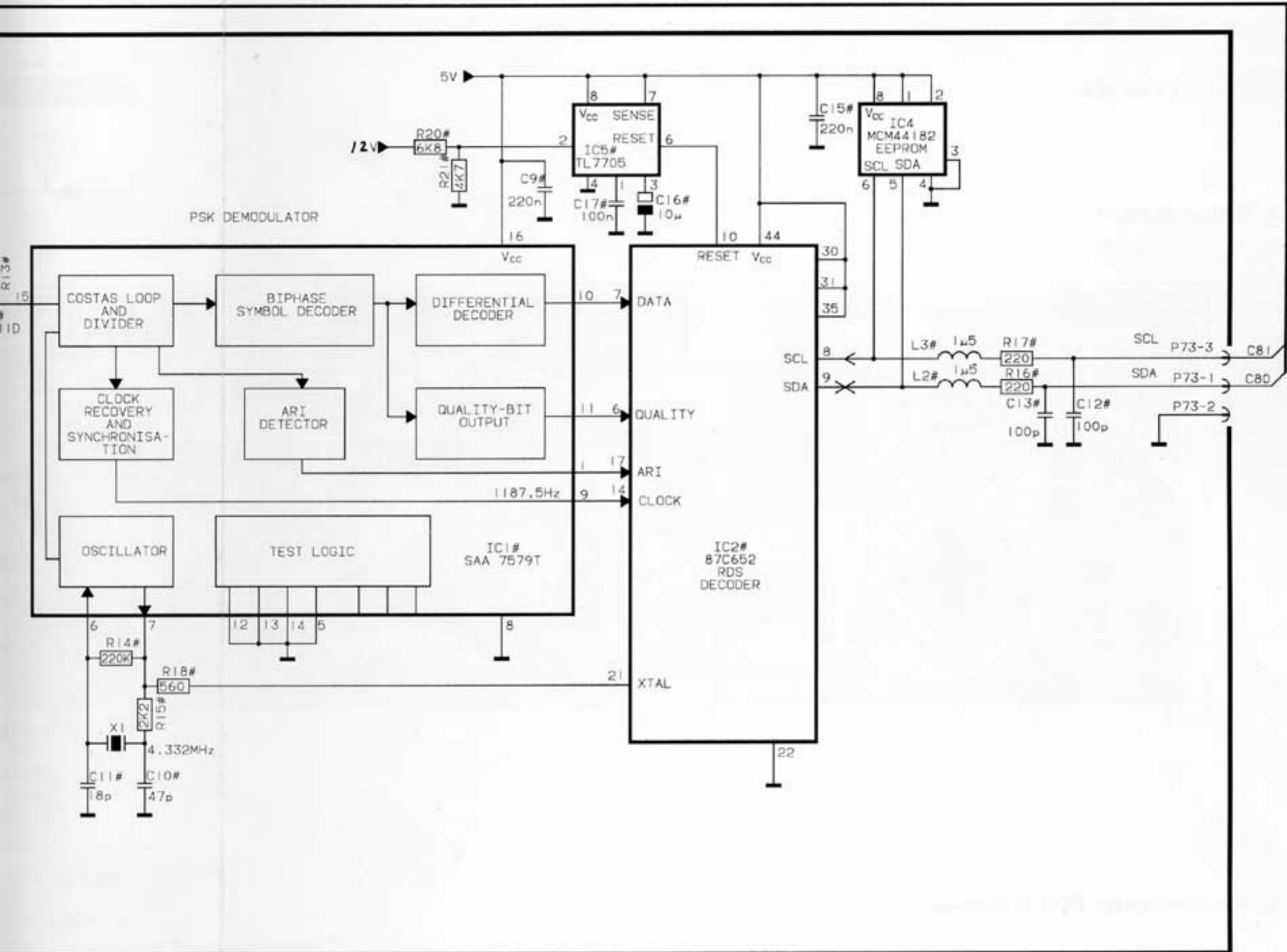
### SMD Survey

- : rear side
- : rear side

### PCB 1, Amp. f. AM loop antenna







PCB 10, RDS

